

# Accommodation Services

**Located at:** 273 Manchester Street, Christchurch CBD (next to New Regent St)

**Tailored Accommodation for:**

- Workforce
- Site Supervisors
- Project Managers
- Tradesmen
- Estimators
- Seasonal Workers
- Hospitality Staff
- Construction
- Conferences
- Conventions
- Trade shows
- Sporting Events



**Accommodation**

- ▲ 150+ King Single and Double Beds
- ▲ 3 Meals (including Crib lunch) per day (6 days)
- ▲ Onsite Bar, Café and Entertainment Facilities
- ▲ Tool storage / Laundry Services / Walk to work sites in CBD

**Indicative Pricing** (subject to confirmation on enquiry)

- ▲ Bunk beds with shared bathroom from \$35 per day
- ▲ Private room with TV shared bathroom from \$65 per day
- ▲ Private room with ensuite from \$100 per day



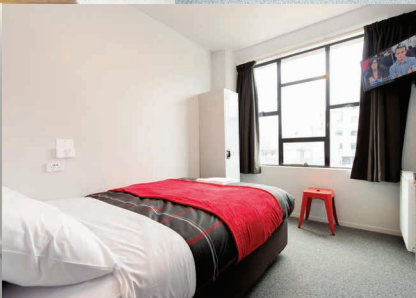
U R B A N Z

**Contact:** Office Landline 03 366 4414

Onsite 022 010 7607 or email on: [sales@urbanz.org](mailto:sales@urbanz.org)

**[www.urbanz.net.nz](http://www.urbanz.net.nz)**





URBANZ  
[www.urbanz.net.nz](http://www.urbanz.net.nz)

## NEW Accommodation Services

273 Manchester Street, Christchurch CBD  
(next to New Regent St)